

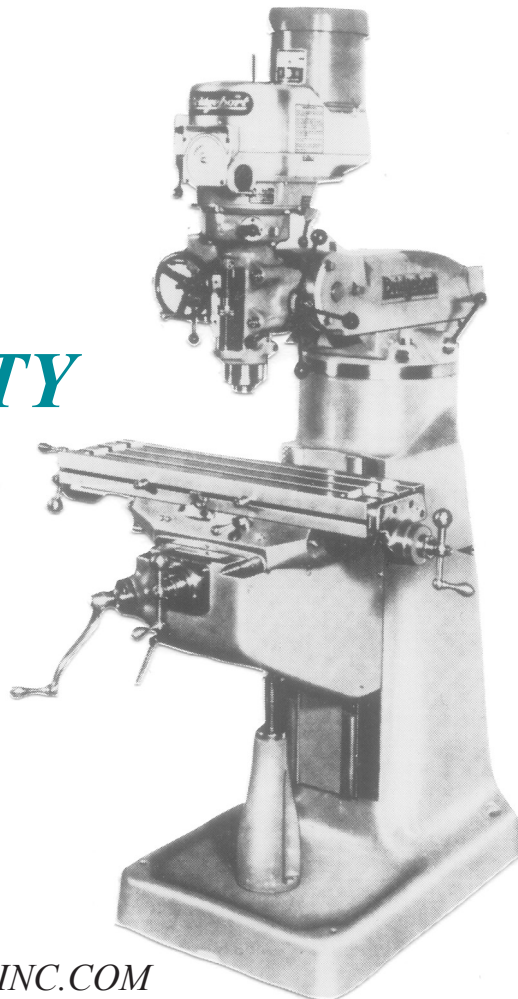
# B-SERIES Vertical Knee-Type Milling Machine

## Replacement Parts and Accessories

USA

*TOP  
QUALITY*

*WE ACCEPT VISA  
AND MASTERCARD*



*LOW  
COST*

IMPORTS

See Us At: [WWW.MATACOINC.COM](http://WWW.MATACOINC.COM)

EMAIL: [matacoinc@aol.com](mailto:matacoinc@aol.com)

*Mataco*

formerly

Machine & Tool Accessories Co.



2861 East Royalton Road  
Broadview Heights, OH 44147

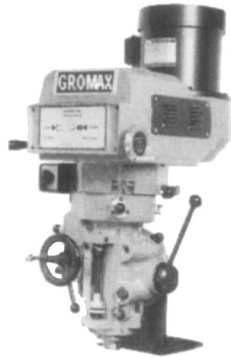
Phone 440-546-8355

Toll Free 1-888-785-7810

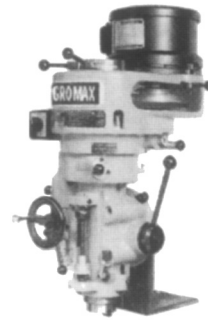
Fax 440-546-8311

# Milling Machine Head

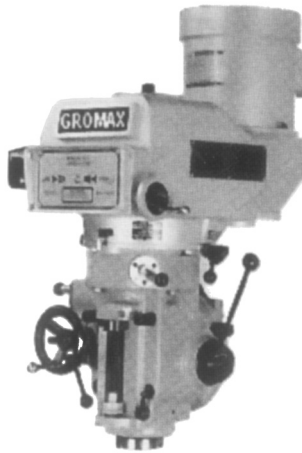
For Bridgeport or Bridgeport Type Taiwanese Mills.



**Model: MH-V100**  
**VARIABLE SPEED (3HP)**

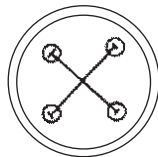


**Model: MH-V200**  
**16 SPEED**  
**STEP PULLEY (3HP)**



**Model: MH-V400**  
**VARIABLE SPEED (5HP)**

**Mounting data:**  
5 HP Milling head  
bolt circle is  $\phi 6.5"$   
3HP Milling head  
bolt circle is  $\phi 6.0"$



**Features:**

- Complete new mill head for your old machine body or special machinery.
- Chrome quill with super precision preloaded bearing.
- Spindle nose taper I.D. 0.0002" / 0.005mm T.I.R.
- Spindle Taper: R8.
- Quill power feed. 0.0015" / 0.003" / 0.006" REV.
- Quill Travel: 5" / Quill diameter 3 3/8".
- Power output: Variable speed 220V / 440V 3PH.  
Step pulley 220V / 3PH.

**Spare Parts Available**

Model	Descriptions Spindle range
MH-V100	Variable speed 80--4200rpm
MH-V200	16 step pulley 80--5440rpm
MH-V400	Variable speed 70--3600rpm

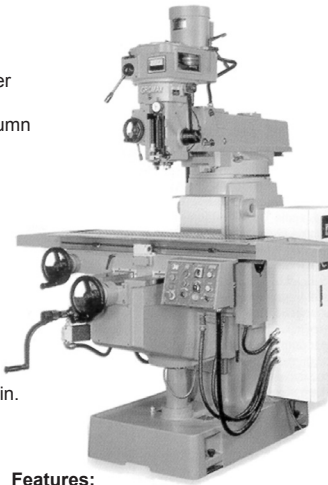
*All other spare parts for Bridgeport or Bridgeport type Taiwanese mills are also available. Please call or fax your inquiry.*

ALL PRICES ARE SUBJECT TO CHANGE.

## Vertical Milling Machine

### Specifications:

Spindle Speeds  
 .... 60~3600RPM Variable Speed  
 Spindle Nose Taper  
 .... NST & IS040  
 Over arm travel..... 16.14"  
 Quill travel .....5.51"  
 Distance from spindle nose to center  
 .... 20.86"  
 Distance from spindle center to column  
 .... 6.69"~22.83"  
 Table Area ..... 11"x49"  
 Longitudinal Travel 29.5"  
 Cross Travel ..... 15.75"  
 Vertical Travel..... 17.32"  
 T-slot (W x No. x Distance)  
 .... 0.62" x 0.12" x 2.56"  
 Automatic Longitudinal  
 .... travel Speed.....0~59"/min.  
 Quick Longitudinal travel speed  
 .... 137.79"/min.  
 Quick vertical travel speed 45.27/min.  
 Spindle motor  
 .... 5 HP (Inverter control)  
 Knee motor ..... 1 HP  
 Lubrication pump ...75W  
 Dimensions.....74" x 89" x 96"  
 Gross weight.....6270 Lbs.  
 Net weight .....5390 Lbs.



**MK1194 shown**  
**5HP**  
**11" x 49" Table**  
**Travel:**  
**29.5"x15.74"x17.32"**

### Features:

- Inverter-driven spindle motor
- Meehanite castings
- Lubrication system
- Hardened & ground square ways (X & Z)
- Class 7 spindle bearings
- Hardened & ground gears head
- Longitudinal: 1kw Mitsubishi AC servo motor

**MR1149 (variable Speed)**

## Vertical Turret Milling Machine

### Quality Machine Tool at Affordable Price

#### Standard Features:

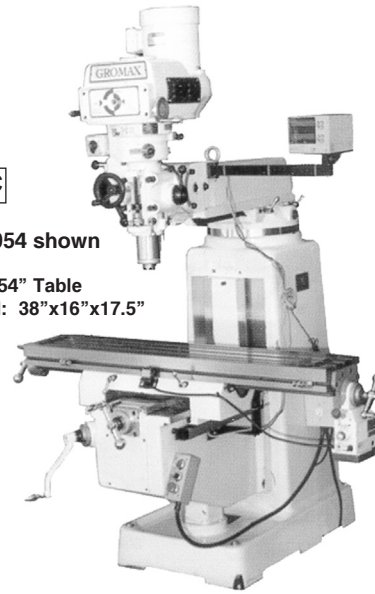
- Precision grade class 7 bearing
- Meehanite casting
- Hardened & ground table
- Precision hardened & ground ways
- Turcite lining saddle ways
- Double-lock nut on both X and Y axis
- Chromed quill and honed head
- Coolant system with nozzle and valve
- Lubrication system
- ISO 9002 certified

#### Parallelism:

X-axis 0.0008"/20"  
 Y-axis 0.0008"/12"  
 Knee-axis 0.0008"/12"  
 Ram 0.0008"/12"  
 Quill 0.0005"/5"  
 Spindle bore runout 0.00015"/T.I.R.

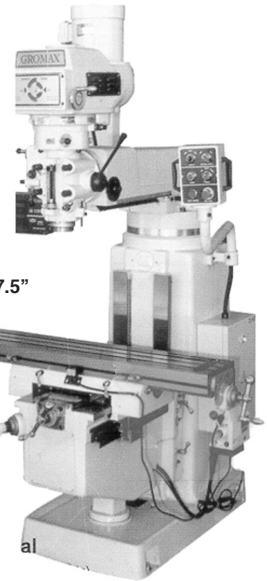
**C**

**MK1054 shown**  
**3HP**  
**10" x 54" Table**  
**Travel: 38"x16"x17.5"**



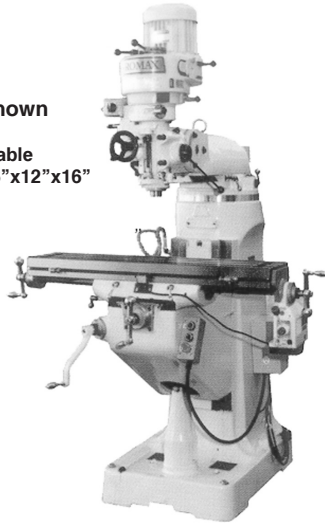
**D**

**MK1054 shown**  
**5HP**  
**10" x 54" Table**  
**Travel: 38"x16"x17.5"**



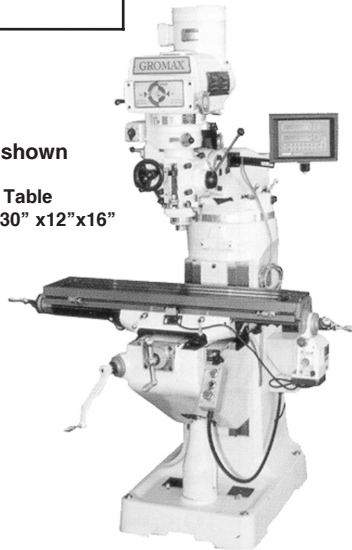
**A**

**MS942 shown**  
**3HP**  
**9" x 42" Table**  
**Travel: 36"x12"x16"**



**B**

**MV942 shown**  
**3HP**  
**9" x 42" Table**  
**Travel: 30" x12"x16"**



### Package Special

- 2-axis DRO system (mitutoyo Digimatic)
- Longitudinal (AL-235X) power feed
- Installation

### Standard Accessories:

- One shot lubrication
- Draw bar
- Instruction manual
- Dust cover
- Tool box w/tools

### Special Bonus:

- Receive a 6" machine vise "Free" when a check is mailed with purchase order

**All machines in stock. Ready to go!! Call for Detail.**

### Specifications:

Model	MS942 Step Pulley	MV942 Variable Speed	MV1054 Variable Speed	MK1054 Variable Speed
<b>Work table</b>	<b>9" x 42"</b>	<b>9" x 42"</b>	<b>10" x 54"</b>	<b>10" x 54"</b>
T-Slot Size	5/8"	5/8"	5/8"	5/8"
Longitudinal travel (X)	30"	30"	38"	38"
Cross travel (Y)	12"	12"	16"	16"
Knee travel (Z)	16"	16"	17-1/2"	17-1/2"
Quill travel	5"	5"	5"	5"
Ram travel	12"	12"	20"	20"
Spindle to column (max./min.)	18-1/2" / 6-3/4"	18-1/2" / 6-3/4"	22-1/2" / 6-3/4"	22-1/2" / 6-3/4"
Spindle to table (max./min.)	18" / 2-1/8"	18" / 2-1/8"	20" / 2-1/8"	20" / 2-1/8"
Quill diameter	3-3/8"	3-3/8"	3-3/8"	4-1/8"
Spindle taper	R8	R8	R8	N.S.T 40
Spindle speed range	80-5440 RPM (16 steps)	60-4200 RPM	60-4200 RPM	70-3600 RPM
Auto Quill feed	0.0015 - 0.003 - 0.006 per rev.	0.0015 - 0.003 - 0.006 per rev.	0.0015 - 0.003 - 0.006 per rev.	0.0015 - 0.003 - 0.006 per rev.
Spindle Motor	3HP	3HP	3HP	5HP
Electrical supply	60 Hz/ 3 phase/220 V prewired	60 Hz/ 3 phase/220 V prewired *440V available upon request	60Hz/ 3 phase 220 V rewired *440 V available upon request	60Hz/ 3 phase/220 V prewired *440 V available upon request
Weight	2200 lbs	2400 lbs	3000 lbs	3800 lbs

**ALL PRICES ARE SUBJECT TO CHANGE.**

# Mataco Inc.

## Your source for EDM Supplies:

- Brass wire**
- **Zinc Coated wire**
- **X wire for the Charmilles and other wire machines**
- **Filters for Sodick, Mits, Fanuc, Charmilles,**
- **Hitachi, Brother, and Japax**
- **Sinker filters available as well**
- **Flush cups, contacts, diamond guides, and**
- **other wear parts**
- **Resin Regeneration services available as well**
- **EDM cleaners**
- **Stocked at our Broadview Hts. Location**
- 

1-888-785-7810 or visit [www.matacoinc.com](http://www.matacoinc.com)



**CHECK OUT OUR EBAY STORE FOR THE LATEST SPECIAL SAVINGS. THESE MAY NOT BE IN THE CATALOG. USE THE LINK ABOVE FROM OUR WEBSITE.**



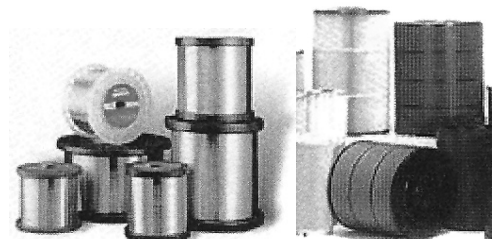
WH101



WH102



WH103



# ELEVATING CRANK

## FOR VERTICAL KNEE TYPE MILLING MACHINES



Steel  
Revolving  
Handle

1145-01C Chrome Plated  
Rotating Handle

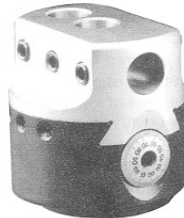
1145-01C OR  
Original

ALL PRICES ARE SUBJECT TO CHANGE.

### Boring Head C-Type

**Features:**

The direct reading adjusting screw is ground after hardening and a plainly marked dial face in non-reflecting stain chrome allow easy reading and adjustments of 0.0005" or less.; With a variety of shanks, this model takes a 1-1/2"-18 threaded shank.



Model	BC2 inch	BC3 inch	BC4 inch
<b>Actual Size</b>	2" dia	3" dia	4" dia
<b>Overall length</b>	2-13/32"	3-5/32"	3-1/2"
<b>Boring bar</b>	1/2"	3/4"	1"
<b>Hole size Center Dist. Between Holes</b>	5/8"	15/16"	1-1/4"
<b>Cross hole dia.</b>	1/2	3/4"	1"
<b>Offset</b>	5/8"	1"	1-1/16"
<b>Weight</b>	2 Lbs	5 Lbs	7 Lbs

**Shanks and Adapters**

Model	Model
R8	MT#3
NT30	MT#4
NT40	MT#5
NT50	

**Straight Shank**

Dia
1/2"
3/4"
1"
1 1/4"

### 6" NC Machine Vise

**Features:**

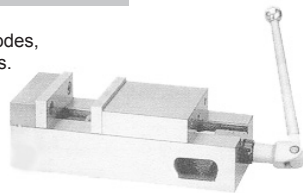
Flatness of all sides to .001" guaranteed modes, upright, left and right side.; Up to 15,000 lbs. clamping force.

<b>Model</b>	HMC-6
--------------	-------

**Specifications:**

Jaw Width	Total Height	Max. Opening	Overall Length	Weight
6"	4.45"	6-1/4"	17-1/2"	68LB

**Second Generation Super-Lock Vise.** NC style allows side by side mounting. Jaw can't lift, work piece can't tilt.

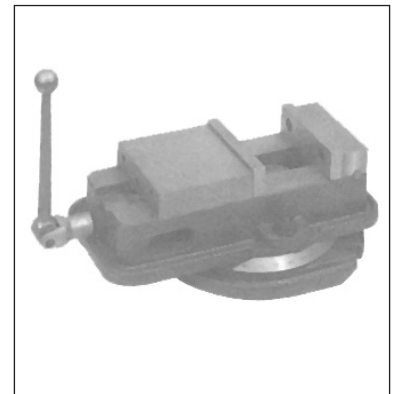


### 4 or 6" Precision Swivel Base Machine Vise

This machine vise, a quality import, is recommended for single piece small production runs and wherever greater clamping force is required. The vise comes complete with a swivel base, one set of keys, and one set of standard jaws.

*A Full One-Year Warranty!*

- The vise bed is case from 80,000 pound ductile iron which resists deflection bending.
- Each pound of force in horizontal induces one-half pound of downward force, eliminating jaw tilt.
- The sliding surface of the vise bed is flame hardened and ground.
- The lead screw is enclosed for maximum protection.
- The swivel base is graduated 360 degrees.
- Needled bearing thrust collar.
- All vises are matched within .002, (Jaw height)



product number: 202-1002 - 6"  
product number: 202-1014 - 4"

#### SPECIFICATIONS

Jaw Width	Jaw Opening	Jaw Depth	Length	Overall Width	Vise Height	Shipping Weight
4"	4 1/8"	1 1/4"	12 3/4"	6 1/4"	3 3/8"	32 lbs.
6"	6 1/4"	1 1/2"	16 3/4"	8 1/4"	4 3/8"	100 lbs.

ALL PRICES ARE SUBJECT TO CHANGE.

# POWER FEEDS



**NEW**

## FEATURES:

- Smooth Running with High Torque
- New & Stronger Design
- Assures Long Trouble Free Life
- Easy Maintenance, easily replaceable insert type connectors
- All Spare Parts in Stock
- One Year Warranty

## For Bridgeport Type Milling Machines!

## SPECIFICATIONS:

Driving-Variable Speed

Torque: 250 Series: 150 Lbs-In  
235 Series: 135 Lbs-In

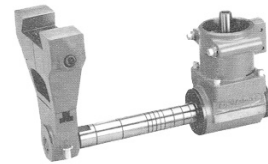
Speeds: 250 Series: 0-200 RPM, Rapid: 200 RPM  
235 Series: 0-140 RPM, Rapid: 200 RPM

Voltage: 110 V 50/60 Hz.

Model		Torque
SP-250X	Longitudinal Feed (X) W/Spare Plastic Gear & Safety Handle	150 Lbs-in
AL-250X	Longitudinal Feed (X)	150 Lbs-in
AL-250Y	Cross Feed (Y)	150 Lbs-in
AL-250Z	Knee Feed (Z)	150 Lbs-in
Model		Torque
AL-235X	Longitudinal Feed (X)	135 Lbs-in
AL-235Y	Cross Feed (Y)	135 Lbs-in
AL-235Z	Knee Feed (Z)	135 Lbs-in
PE-500	Extension Shaft Kit (1/2" - 20)	

Call for prices.

## Universal Right Angle Attachment



### Features:

- Fits all mills with 3-3/8" Quill Diameter and R8 Spindle Taper.
- Converts a vertical mill into a horizontal mill.
- Concave & Convex Groove
- Made of heat treated alloy steel.
- Set Includes Right Angle head, arbor support, and milling arbor

Description	R8 Spindle Model #	NT40 Spindle Model #
Complete Set	URAMHA	URAMHB
Individual components		
Right Angle Head	URAMHC	URAMHD
Arbor Support	URAMHE	URAMHF
Milling Arbor	URAMHG	URAMHH

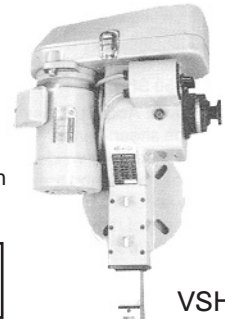


**1" R8 Stub Arbor**

## Vertical Slotting Head

### Features:

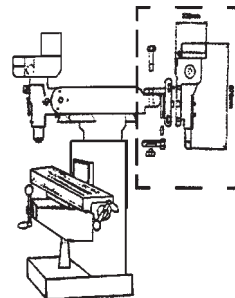
Forms intricate shapes, extruded dies and complex patterns.; Mounts on the rear of the V-Ram (suitable for any Bridgeport type mills); Easy adjustment to make any key or groove on cone or tilted surface; Vise-type clamping flange (Easy mounting and discharging); Swings the turret 180° to position if over the table and ready to work; Uses a vertical tool motion to shape and slot.



**VSH-100**

Model	
VSH-100	
VSH-100A	(slotting cutter set)

**VSH-100A tool cutter**



### Specification:

#### Motor:

3/4 HP 3 phase,  
220v/60HZ

#### Motor Speed:

1370 rpm

#### Stroke:

0-4: (Increments of 1/8")  
Strokes per minute (4)  
93-130-185-250  
No. of Stroke Steps: 34

## Air Power Drawbar

Reduce operators fatigue, minimize tool-change-time.

Available for most manual & CNC mills with standard R8, #30 or #40 taper tool holders.

### Features:

- Easy to install - No special drawbar necessary to use the existing drawbar, install in 10 minutes.
- Pre-connected assembly-use compressed air only, no electrical wiring needed.
- Operated on shop air supply-filter/ lubricator, regulator and gauge are included with each unit provide clean oiled air to ensure long lasting life.
- Use standard shop air pressure: approximately 90 P.S.I.



**ADB158-V**

**ADB158-S**

**one year warranty!**

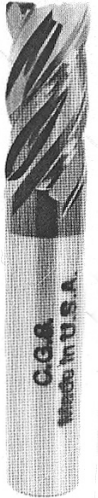
Model	
ADB158-V	for variable speed mill
ADB158-S	for step pulley mill

# CARBIDE TOOLING

**SOLID CARBIDE END MILLS**  
**“YOU WON’T BUY BETTER QUALITY”**  
**30 DEGREE HELIX UNCOATED & ALTiN COATED**  
**PROUDLY MANUFACTURED IN OHIO U.S.A.**  
**4-FLUTE CENTER CUTTING - STANDARD LENGTH**

**(140 SERIES) SQUARE END**  
**ONLY ITEMS BELOW FOR SPECIAL**

EDP#	DIA.	LOC	OAL	UNCOATED	ALTiN
1401250	1/8	1/2	1-1/2		
1401875	3/16	5/8	2		
1402500	1/4	3/4	2-1/2		
1403125	5/16	13/16	2-1/2		
1403750	3/8	1	2-1/2		



**“HV”**

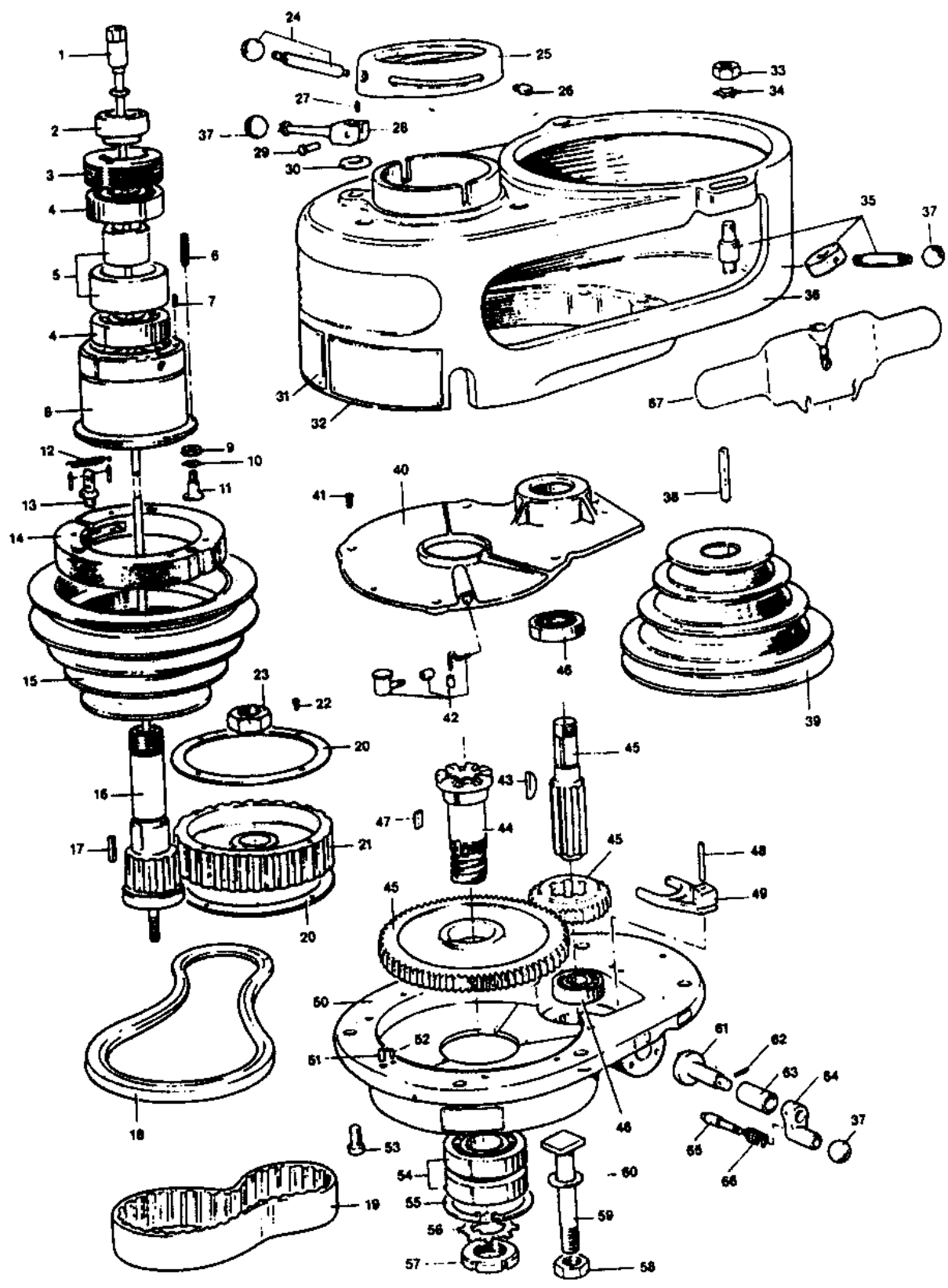
**Call For Prices**

## **SQUARE END AND CORNER RADIUS ALTiN COATED HIGH VELOCITY “OFFSET” GEOMETRY 4-FLUTE END MILLS**

<b>SERIES HV140: HI VELOCITY Standard Length</b>				
EDP#	Dia	Shank	LOC	OAL
HV 140-1250	1/8	1/8	1/2	1 1/2
HV 140-1875	3/16	3/16	5/8	2
HV 140-2500	1/4	1/4	3/4	2 1/2
HV 140-3125	5/16	5/16	13/16	2 1/2
HV 140-3750	3/8	3/8	1	2 1/2
HV 140-4375	7/16	7/16	1	2 3/4
HV 140-5000	1/2	1/2	1	3
HV 140-6250	5/8	5/8	1 1/4	3 1/2
HV 140-7500	3/4	3/4	1 1/2	4
HV 140-1000	1	1	1 1/2	4
<b>SERIES HV143: HI VELOCITY Standard Length Corner Radius</b>				
EDP#	Dia	Radius	LOC	OAL
HV 143-1250	1/8	.010 - .015	1/2	1 1/2
HV 143-1875	3/16	.015 - .020	5/8	2
HV 143-2500	1/4	.015 - .020	3/4	2 1/2
HV 143-3125	5/16	.015 - .020	13/16	2 1/2
HV 143-3750	3/8	.015 - .020	1	2 1/2
HV 143-4375	7/16	.015 - .020	1	2 3/4
HV 143-5000	1/2	.025 - .030	1	3
HV 143-6250	5/8	.030 - .035	1 1/4	3 1/2
HV 143-7500	3/4	.035 - .040	1 1/2	4
HV 143-1000	1	.035 - .040	1 1/2	4

*ALL PRICES ARE SUBJECT TO CHANGE.*

# Step Pulley Top Housing



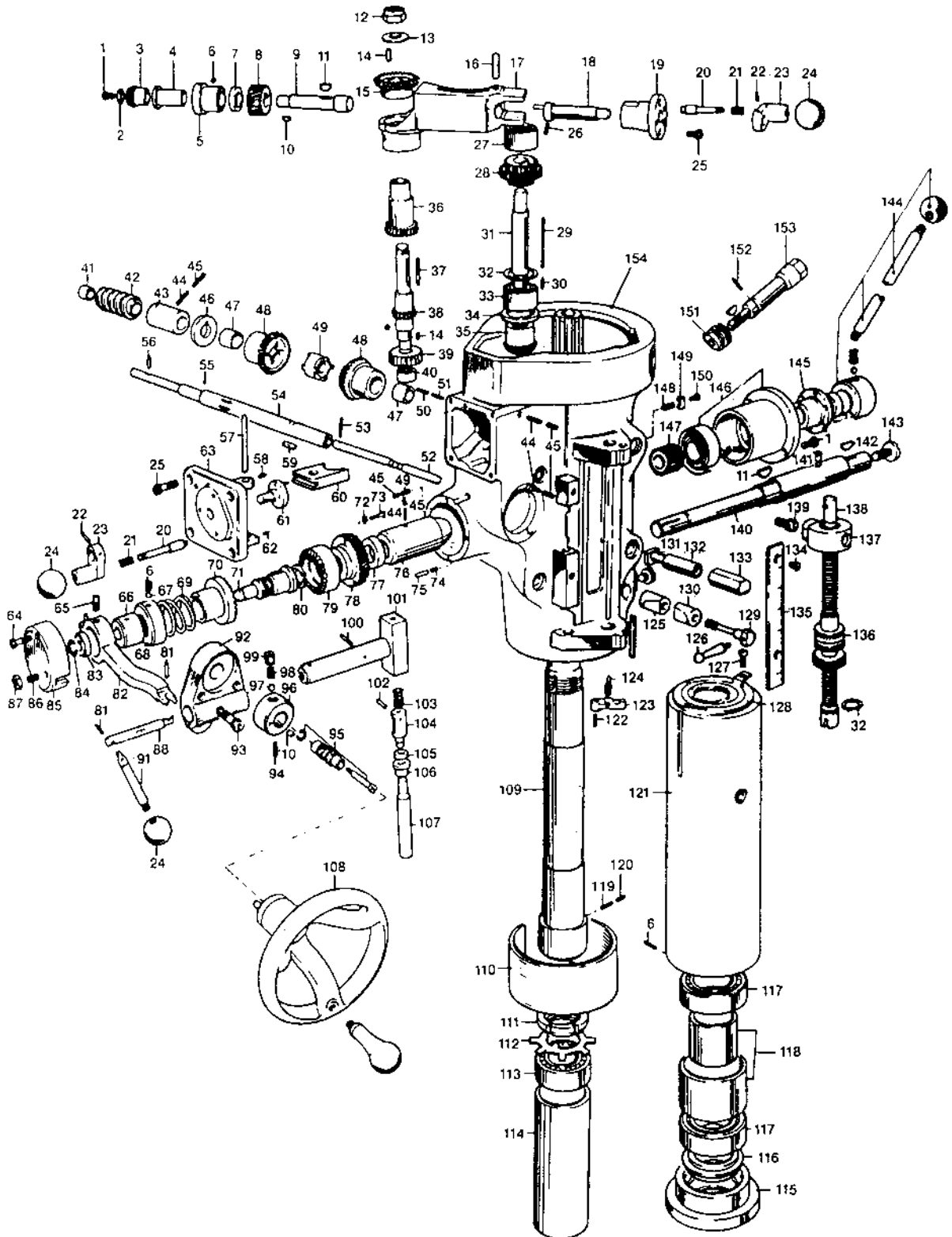


# Step Pulley Top Housing

ITEM NO.	PART NO.	DESCRIPTION
1	1028	Drawbar (TWO-LIFE)
2	1141	Upper Bearing Locknut
3	1142	Bearing Sleeve Locknut
4	1251	Ball Bearing (2 Req.)
5	1252	Upper Bearing Spacer (Large & Small)
6	1108	Compression Spring (4 Req.)
7	1254	Socket Set Screw (2 Req.)
8	1128	Spindle Pulley Bearing Sleeve
9	1132-03	Jam Nut
10	1132-02	External Lock Washer
11	1132-01	Brake Ring Screw (3 (Req.))
12	1111-02	Brake Spring (2 Req.)
13	1107	Brake Lock Stud
14	1111	Brake Block Assembly
15	1255	Spindle Pulley
16	1116	Spindle Pulley Hub
17	1125	Spindle Pulley Key
18	1256	"V" Belt
19	1115	Timing Belt
20	1144	Timing Belt Pulley Flange
21	1146-A	Timing Belt Pulley
22	1257	Flat Head Screw
23	1258	Hex Jam Nut
24	1100	Spindle Clutch Lever w/Ball
25	1143	Cam Ring
26	1109	Cam Ring Pin (2 Req.)
27	1260	Socket Set Screw
28	1261	Brake Lock Handle
29	1262	Brake Lock Pin
30	1263	Brake Lock Washer
31	1074	Hi-Low Range Name Plate
32	1075	Spindle Speed Name Plate
33	1264	Hex Jam Nut
34	1265	Lock Washer

ITEM NO.	PART NO.	DESCRIPTION
35	1155-03	Motor Locknut Assembly (2 Req.)
36	1266	Belt Housing
37	1259	Plastic Ball
38	1268-01	Key for Motor Pulley
39	1268	Motor Pulley
40	1269	Gear Housing Cover
41	1270	Round Head Screw (5 Req.)
42	1272	Oiler Tube Assembly
43	1275	Bull Gear Key
44	1160	Splined Gear Hub
45	1276	Spindle Bull Gear Assembly
46	1277	Bearing (2 Req.)
47	1530	Key
48	1284	Dowel Pin
49	1282	Back Gear Shifter Fork
50	1283	Gear Housing
51	1284	Dowel Pin (2 Req.)
52	1285	Roll Pin (2 Req.)
53	1286	Socket Cap Screw (6 Req.)
54	1287	Ball Bearing (2 Req.)
55	1288	Snap Ring
56	1289	Lockwasher
57	1290	Bearing Locknut
58	1291	Hex Nut Hardened (3 Req.)
59	1292	Vertical Tee Bolt (3 Req.)
60	1496	Vertical Bolt Washer (3 Req.)
61	1294	Back Gear Shift Crank
62	1295	Roll Pin
63	1296	Back Gear Shift Bushing
64	1297	Shift Crank
65	1299	Gearshift Plunger
66	1300	Compression Spring
67	1301	Belt Guard Assembly
•	1600	J Head Motor

# Head Assembly

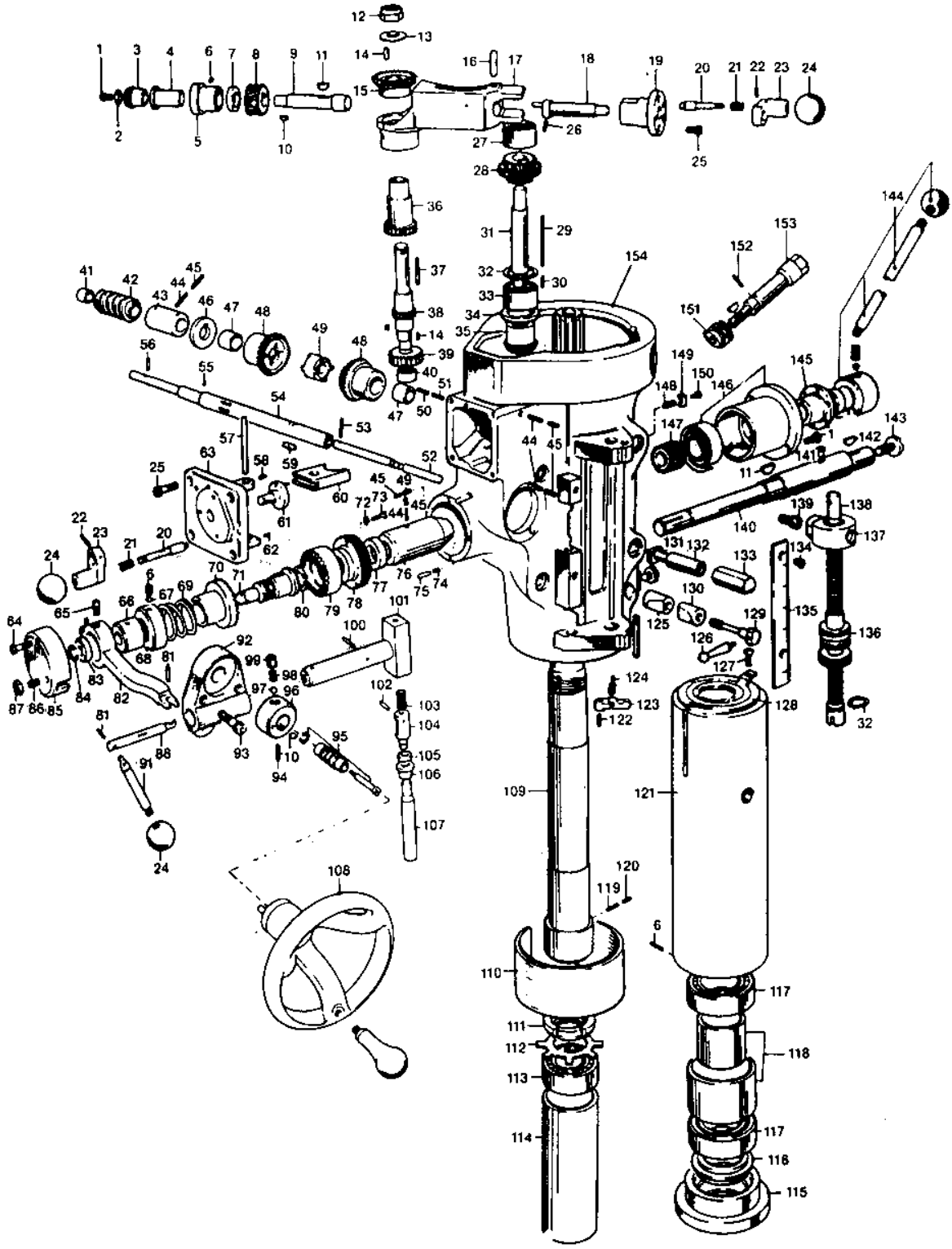


# Head Assembly

ITEM NO.	PART NO.	DESCRIPTION
1	1270	Round Head Screw
2	1303	Bevel Pinion Washer
3	1304	Feed Bevel Pinion
4	1305	Feed Worm Gear Shaft Sleeve
5	1306	Worm Cradle Bushing
6	1307	Set Screw
7	1308	Worm Gear Spacer
8	1309	Feed Drive Worm Gear
9	1310	Feed Drive Worm Gear Shaft
10	1311	Warm Shaft Key
11	1179	Key
12	1313	Locknut
13	1314	Washer
14	1315	Cluster Gear Key
15	1316	Feed Reverse Bevel Gear
16	1317	Feed Engage Pin
17	1318	Worm Gear Cradle
18	1319	Worm Gear Cradle Throw-Out
19	1320	Shift Sleeve
20	1299	Gearshift Plunger
21	1300	Compression Spring
22	1295	Roll Pin
23	1297	Shift Crank
24	1259	Plastic Ball
25	1326	Cap Screw (3 Req.)
26	1254	Set Screw
27	1328	Gear Shaft Upper Bearing
28	1329	Cluster Gears Assembly
29	1330	Cluster Gear Key
30	1331	Round End Key
31	1332	Cluster Gear Shaft
32	1333	Snap Ring
33	1334	Bevel Gear Bearing
34	1335	Bevel Gear Thrust Spacer
35	1336	Feed Reverse Bevel Pinion
36	1337	Feed Driving Gear
37	1338	Key
38	1339	Cluster Gear Input Shaft
39	1340	Feed Drive Gear
40	1341	Needle Bearing
41	1342	Bushing
42	1343	Worm
43	1344	Feed Worm Shaft Bushing
44	1345	Socket Set Screw

ITEM NO.	PART NO.	DESCRIPTION
45	1346	Mock-it Lockscrew
46	1347	Feed Worm Shaft Thrust Washer
47	1348	Bushing
48	1349	Feed Reverse Bevel Gear
49	1350	Feed Reverse Clutch
50	1351	Socket Set Screw
51	1222	Socket Set Screw
52	1120	Reverse Clutch Rod
53	1353	Roll Pin
54	1354	Feed Worm Shaft
55	1355	Pin
56	1356	Pin
57	1357	Feed Shift Rod
58	1358	Socket Set Screw
59	1359	Key
60	1360	Feed Gear Shift Fork
61	1361	Cluster Gear Shift Crank
62	1223	Socket Set Screw
63	1363	Cluster Gear Cover
64	1370	Cap Screw (2 Req.)
65	1371	Clutch Ring Pin (2 Req.)
66	1372	Clutch Ring
6	1307	Set Screw
67	1374	Brass Plug
68	1375	Overload Clutch Locknut
69	1138	Safety Clutch Spring
70	1139	Overload Clutch
71	1376	Overload Clutch Sleeve
72	1377	Single Spring Washer (3 Req.)
73	1378	Round Head Screw (3 Req.)
74	1108	Compression Spring
75	1383	Clutch Lever Spring Plunger
76	1384	Quill Pinion Shaft Bushing
77	1385	Pinion Shaft Worm Gear Spacer
78	1386	Overload Clutch Worm Gear
79	1140	Overload Clutch Ring
80	1381	Snap Ring
81	1387	Dowel Pin
82	1388	Overload Clutch Trip Lever
83	1389	Overload Clutch Washer
84	1390	Snap Ring
85	1391	Clutch Arm Cover
86	1392	Socket Set Screw
87	1393	Locknut
88	1394	Cam Rod

# Head Assembly

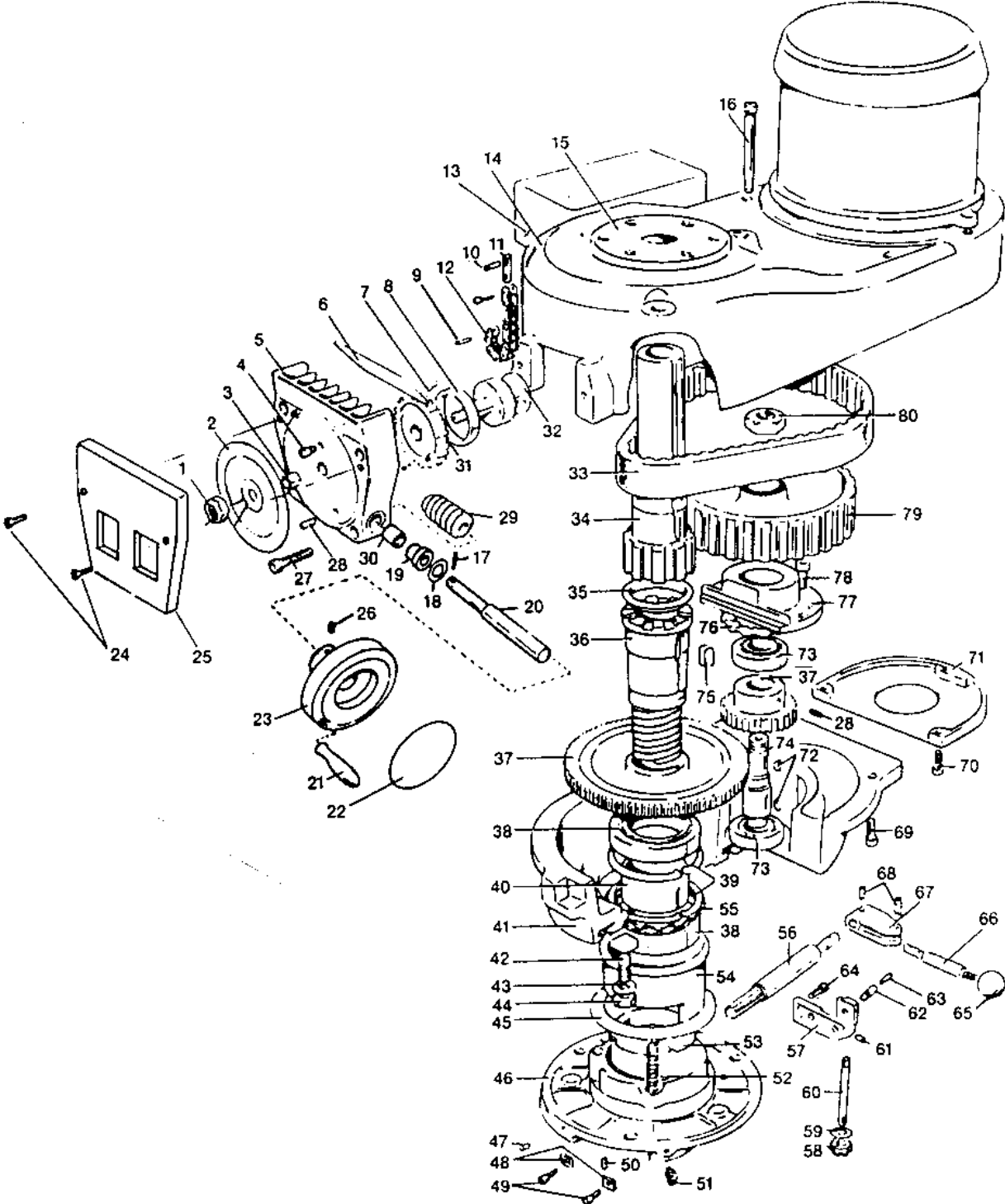


# Head Assembly

ITEM NO.	PART NO.	DESCRIPTION
91	1395	Trip Handle
92	1397	Feed Trip Bracket
93	1195	Cap Screw (2 Req.)
94	1399	Socket Set Screw
95	1030	Feed Reverse Knob Assembly
96	1401	Handwheel Clutch
97	1402	Steel Ball
98	1403	Compression Spring
99	1404	Handwheel Clutch Spring Screw
100	1405	Roll Pin
101	1406	Cam Rod Assembly
102	1407	Roll Pin
103	1408	Compression Spring
104	1409	Trip Plunger
105	1410	Feed Trip Plunger Bushing
106	1411	Trip Plunger Bushing
107	1412	Feed Trip Plunger
108	1413	Handwheel
109	1414-A	Bearing & Sleeve Assembly
110	1414	Spindle
110	1415	Quill Skirt
111	1416	Locknut
112	1417	Lockwasher
113	1418	Upper Spindle Bearing
114	1419	Sleeve
*115	1420	Nose Piece
116	1421	Spindle Dirt Shield
117	1422	Bearing Set Class #7
118	1423	Bearing Spacer - Large & Small
119	1137	Collet Alignment
120	1424	Special Socket Set Screw
121	1425	Quill
122	1426	Socket Set Screw

ITEM NO.	PART NO.	DESCRIPTION
123	1033-02	Feed Trip Level
124	1427	Trip Lever Pin
125	1428	Quill Lock Sleeve (Tapped)
126	1151	Lock Handle
127	1435	Quill Washer Head Screw
128	1164	Felt Washer
129	1429	Quill Lock Bolt
130	1430	Quill Lock Sleeve (Untapped)
131	1431	T-Bolt Assembly
132	1432	Lower Clamping Bolt Spacer
133	1433	Locknut
134-A	1434-A	Upper Round Head Screw
134-B	1434-B	Lower Round Head Screw
135	1165	Micrometer Scale
136	1053	Micrometer Quick Nut
137	1438	Quill Stop Knob
138	1033	Quill Stop Micro-Screw
139	1439	Screw
140	1440	Quill Pinion Shaft
141	1442	Spring Pin
142	1445	Key
143	1124	Pinion Shaft Hub Screw
144	1021	Quill Handle Assembly
145	1448	Pinion Shaft Hub Sleeve
146	1112	Clock Spring Assembly
147	1449	Quill Pinion Gear
148	1033-03	Reverse Trip Ball Lever
149	1451	Feed Reverse Trip Plunger
150	1452	Reverse Trip Ball Lever Screw
151	1096	Worm Gear
152	1453	Socket Set Screw
153	1097	Adjusting Worm Shaft w/Key
154	1454	Quill Housing

# Variable Speed Top Housing Assembly

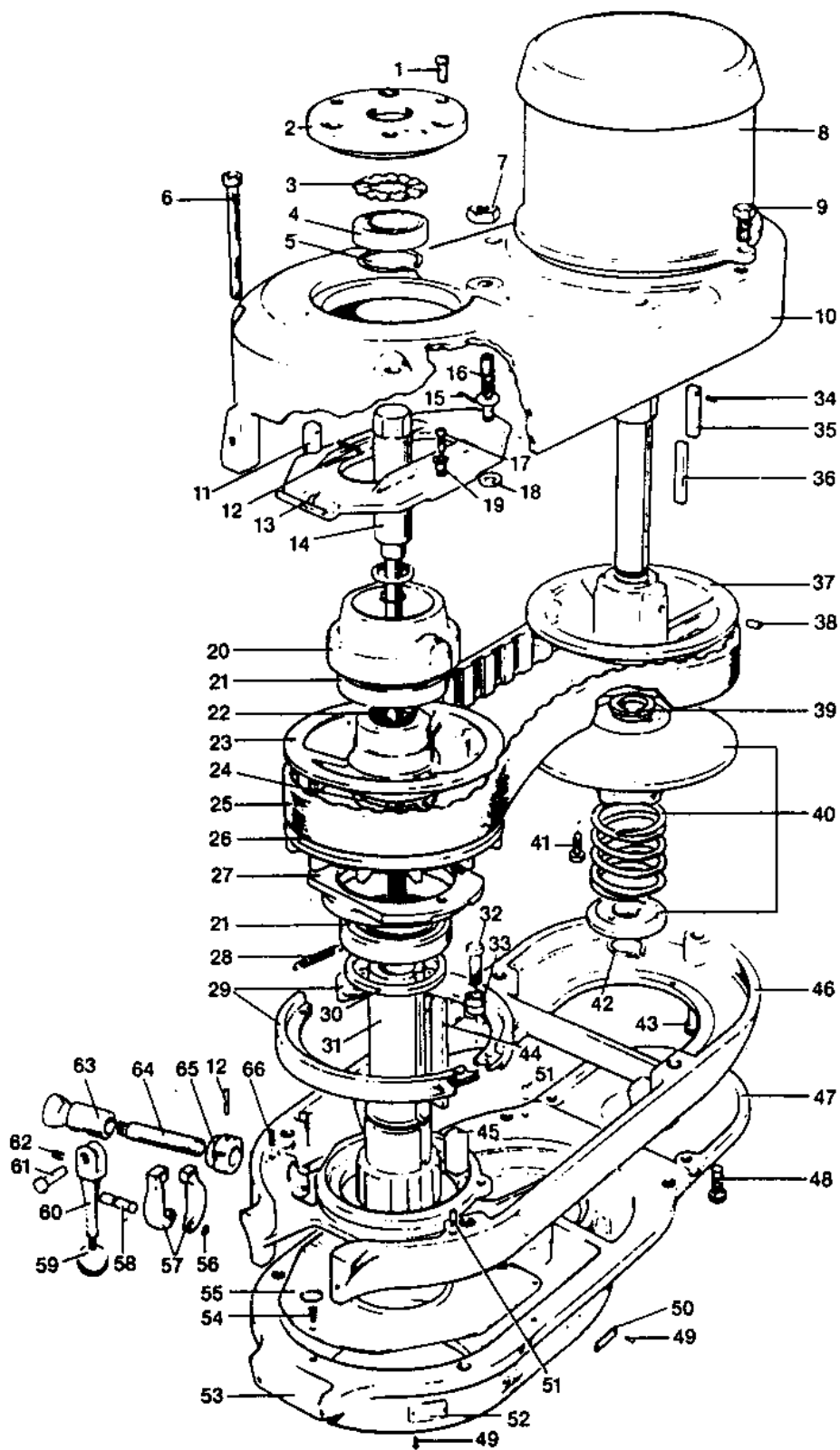


# Variable Speed Top Housing Assembly

ITEM NO.	PART NO.	DESCRIPTION
1	1132-03	Hex Nut
2	1455-A	Vari-Speed Dial 1-1/2 HP
3	1455-B	Vari-Speed Dial 2 HP
3	1348	Bronze Bearing
4	1457	Socket Set Screw
5	1458	Speed Changer Housing
6	1459	Speed Changer Chip Shield
7	1460	Machine Screws ( 2 Req.)
8	1461	Bronze Bearing
9	1462	Roll Pin
10	1463	Roll Pin
11	1464	Speed Change Stud
12	1465	Speed Changer Chain
13	1466	Drum Switch
14	1467	Belt Housing
15	1468	Top Bearing Cup
16	1469	Socket Head Cap Screw (2 Req.)
17	1356	Roll Pin
18	1471	Wave Spring
19	1472	Bronze Bearing
20	1473	Speed Change Shaft
21	1474	Handle
22	1475	Caution Plate
23	1476	Speed Change Handwheel
24	1477	Flat Head Cap Screw (2 Req.)
25	1478	Plastic Face Plate
26	1479	Set Screw
27	1480	Socket Head Cap Screw (2 Req.)
28	1307	Socket Set Screw
29	1343	Worm Gear
30	1486	Bronze Bearing
31	1487	Speed Changer Spur Gear
32	1488	Speed Change Chain Drum
33A	1115	1-1/2 HP Timing Belt
33-B	1536	2 HP Timing Belt
34-A	1117	1-1/2 HP Spindle Pulley Hub
34-B	1537	2 HP Spindle Pulley Hub
35	1489	Timing Pulley Clutch Sleeve
36	1161	Splined Gear Hub
37	1490	Spindle Bull Gear Assembly
38	1491	Ball Bearing (2 Req.)
39	1492	Snap Ring (2 Req.)

ITEM NO.	PART NO.	DESCRIPTION
40	1493	Bull Gear Bearing Spacer
41	1494	Gear Housing
42	1495	Vert. Tee Bolts (3 Req.)
43	1496	Steel Washer (3 Req.)
44	1497	Hex Jam Nut (3 Req.)
45	1498	Ball Bearing Gear Sleeve Washer
46	1499	Fixed Clutch Bracket
47	1500	Socket Set Screw
48	1501	Guide for Clutch Bracket (2 Req.)
49	1502	Flat Head Cap Screw (2 Req.)
50	1503	Dowel Pin
51	1504	Oil Cup
52	1505	Compression Spring (3 Req.)
53	1506	Bearing Locknut
54	1507	Bearing Sleeve
55	1508	Wave Spring Washer
56	1509	Bull Gear Shift Pinion
57	1510	HI-LOW Detent Plate
58	1511	Hex Nut (2 Req.)
59	1512	Lock Washer (3 Req.)
60	1513	Studs (3 Req.)
61	1514	Socket Set Screw
62	1516	HI-LOW Detent Plunger
63	1517	Spring
64	1518	Socket Cap Screw (2 Req.)
65	1259	Plastic Ball
66	1520	HI-LOW Shift Crank
67	1521	HI-LOW Pinion Block
68	1522	Roll Pin (2 Req.)
69	1523	Socket Cap Screw (4 Req.)
70	1524	Socket Head Cap Screw
71	1525	Motor Pulley Cover
72	1279	Key (2 Req.)
73	1277	Ball Bearing (2 Req.)
74	1529	Bull Gear Pinion Counter Shaft
75	1530	Key
76	1531	Wave Spring Washer
77	1533	Bull Gear Pinion Bearing Cup
78	1534	Socket Head Cap Screw (2 Req.)
79-A	1146-B	1-1/2 HP Timing Belt Pulley
79-B	1539	2 HP Timing Belt Pulley
80	1258	Jam Nut

# Variable Speed Lower Housing Assembly



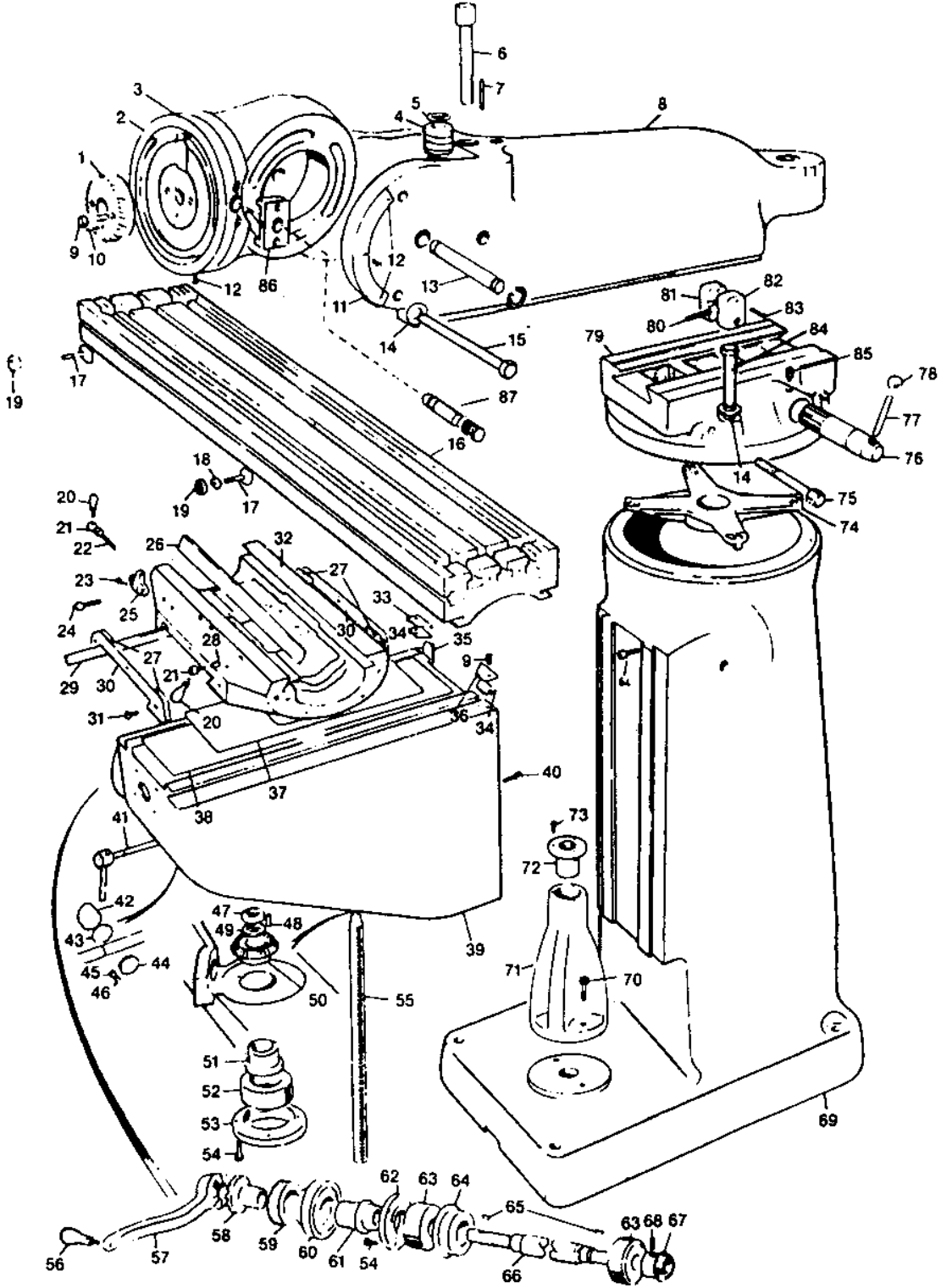


# Variable Speed Lower Housing Assembly

ITEM NO.	PART NO.	DESCRIPTION
1	1195	Socket Screw (3 Req.)
2	1468	Top Bearing Cap
3	1508	Spring Washer
4	1542	Ball Bearing
5	1543	Snap Ring
6	1544	Socket Head Cap Screw (2 Req.)
7	1545	Hex Jam Nut
8-A	1546	Motor 1-1/2 HP
8-B	1547	Motor 2 HP
9	1548	Hex Head Screw (2 Req.)
10	1467	Belt Housing
11	1465	Speed Change Chain Stud
12	1463	Roll Pin
13	1551	Speed Change Plate
14	1026	TWO LIFE DRAWBAR
15	1552	Cotter Pin
16	1553	Speed Change Plate Pivot Stud
17	1554	Socket Head Cap Screw (2 Req.)
18	1555	Washer (2 Req.)
19	1556	Pivot Sleeve (2 Req.)
20	1557	Spindle Pulley Bearing Sliding Housing
21	1558	Bearing (2 Req.)
22	1126	Plastic Insert (2 Req.)
23	1559	Adjustable Drive Variable Disc Assembly
24	1560	Snap Ring
25	1105	Belt
26	1561	Stationary Drive Variable Disc
27	1127	Brake Bearing Cap
28	1562	Brake Spring (2 Req.)
29	1563	Brake Shoe Set
30	1564	Spindle Pulley Spacer
31-A	1117	1-1/2 HP Spindle Pulley Hub
31-B	1537	2 HP Spindle Pulley Hub
32	1565	Hex Head Screw
33	1566	Brake Shoe Pivot Sleeve
34-A	1567	Roll Pin for 1-1/2 HP Drive Key
34-B	1407	Roll Pin for 2 HP Drive Key
35-A	1568	1-1/2 HP Drive Key w/Roll Pin
35-B	1597	2 HP Drive Key w/Roll Pin
36-A	1035-B	Plastic Key for 1-1/2 HP Variable Disc

ITEM NO.	PART NO.	DESCRIPTION
36-B	1035-A	Plastic Key for 2HP Variable Disc
37-A	1569	Stationary 1-1/2 HP Motor Variable Disc
37-B	1598	Stationary 2HP Motor Variable Disc
38	1307	Socket Set Screw
39-A	1113	1-1/2 HP Plastic Insert (2 Req.)
39-B	1114	2 HP Plastic Insert (2 Req.)
40-A	1037	Adjustable 1-1/2 HP Motor Variable Assembly
40-B	1036	Adjustable 2 HP Variable Disc Assembly
41	1469	Socket Head Cap Screw (2 Req.)
42-A	1571	Ret. Ring 1-1/2 HP
42-B	1599	Ret. Ring 2 HP
43	1523	Socket Cap Screw
44	1095	Plastic Key
45	1573	Key
46	1575	Belt Housing Base
47	1525	Motor Pulley Cover
48	1524	Socket Cap Screw
49	1578	Drive Screw
50	1579	HI-LOW Range Nameplate
51	1574	Taper Pin (2 Req.)
52	1581	Quill Feed Nameplate
53	1583	Gear Housing
54	1584	Round Head Machine Screw
55	1585	Gear Housing Plate
56	1030-03	Snap Ring
57	1588	Brake Operating Finger
58	1587	Brake Finger Pivot Stud
59	1259	Plastic Ball
60	1261	Brake Lock Handle
61	1262	Brake Lock Pin
62	1260	Socket Set Screw
63	1592	Sleeve for Brake Lock Shaft
*64	1593	Brake Lock Shaft
65	1594	Brake Lock Cam
66	1307	Socket Set Screw

# Basic Machine

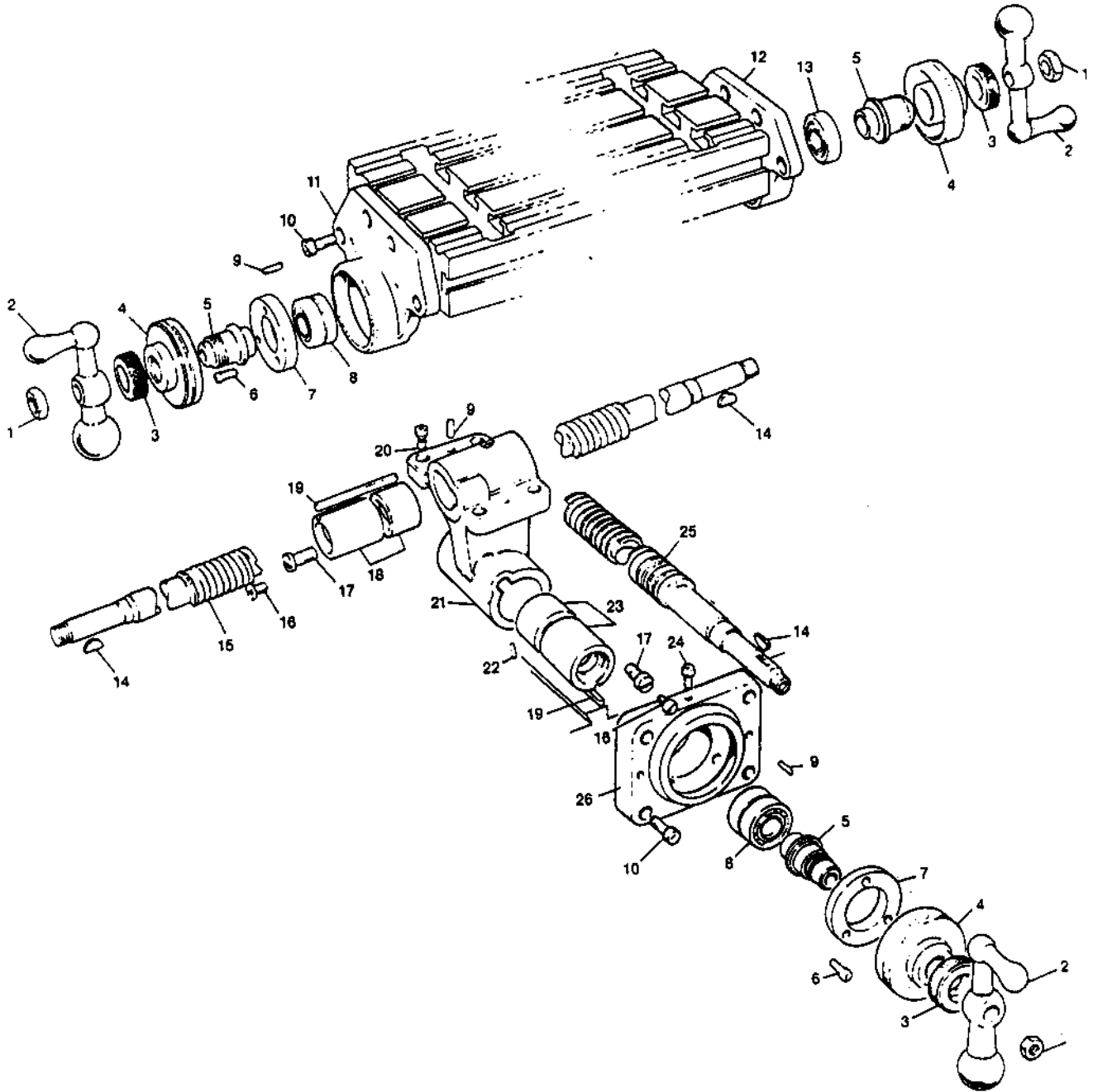


# Basic Machine

ITEM NO.	PART NO.	DESCRIPTION
1	1186	Quill Housing Ad. Gear
2	1187	Ram Adapter
3	1188	Snap Ring
4	1190	Vertical Adjusting Worm Gear
5	1191	Worm Thrust Washer (2 Req.)
6	1192	Vertical Adjusting Worm Shaft
7	1268-01	Worm Key
8	1194	Ram
9	1480	Socket Cap Screw (2 Req.)
10	1196	Roll Dowel Pin
11	1197	Angle Plate
12	1198	Round Head Drive Screw (3 Req.)
13	1199	Adapter Pivot Pin
14	1200	Chamfered & Hardened Washer
15	1201	Adapter Locking Bolt (3 Req.)
16	1202	Table 42" A-36"
17	1203	Stop Piece T-Bolt (2 Req.)
18	1204	Table Lock Piece (2 Req.)
19	1205	Hex Nut (2 Req.)
20	1122	Lock Bolt Handle
21	1206	Lock Bolt
22	1207	Saddle Lock Plunger
23	1208	Socket Head Cap Screw (2 Req.)
24	1106	Gib Adjusting Screw
25	1209	Table Stop Bracket
26	1156	Saddle/Table Gib
27	1154	Wipers (4 Req.)
28	1149	Table Lock Plunger
29	1157	Saddle/Knee Gib
30	1153	Saddle Knee Wiper Plate (2 Req.)
31	1152	Oval Head Screw
32	1211	Saddle
33	1212	Left Hand Column Wiper Holder
34	1163	Knee Wiper Felt (2 Req.)
35	1158	Knee/Column Gib
36	1214	Right Hand Column Wiper Holder
37	1215	Chip Guards - Upper
38	1216	Chip Guards - Lower
39	1217	Knee 12"
40	1148	Stop Screw
41	1218	Knee Lock Shaft Assembly
42	1219	Knee Lock Plunger
43	1220	Washer
44	1221	Knee Binder Plug

ITEM NO.	PART NO.	DESCRIPTION
45	1222	Dog Point Set Screw
46	1223	Set Screw
47	1166	Jam Nut
48	1224	Key
49	1225	Washer
50	1226	Bevel Gear
51	1227-A	Bearing Bushing Spacer
52	1227	Sealed Ball Bearing
53	1228	Bearing Retainer Ring
54	1171	Socket Head Cap Screw
55	1071	Elevating Screw
56	1145-02	Handle
57	1145-01	Elevating Crank
58	1230	Gearshaft Clutch Insert
59	1168	Dial Lock Nut
60	1231	Dial W/100 Graduations
61	1232	Dial Holder
62	1172	Bearing Retaining Ring
63	1178	Grease Sealed Bearing
64	1235	Bearing Cap
65	1179	Key
66	1236	Elevating Shaft for 12" Knee
66-A	1236-B	Elevating Shaft for 9" Knee
67	1237	Bevel Position
68	1238	Set Screw
69	1239	Column
70	1175	Socket Head Cap Screw
71	1241	Pedestal
72	1072	Elevating Nut
73	1242	Socket Head Cap Screw
74	1243	Spider
75	1129-03	Ram Lock Stud
76	1244	Ram Pinion
77	1159	Ram Pinion Handle
78	1245	Plastic Ball
79	1246	Turret
80	1129-04	Ram Clamp Bar
81	1129-01	Ram Clamp Untapped
82	1129-02	Ram Clamp Tapped
83	1247	Split Pin
84	1248	Locking Bolt
85	1249	Ram Pinion Screw
86	1250	Stop Bracket
87	1251-A	Stop Pin

# Leadscrew Assembly

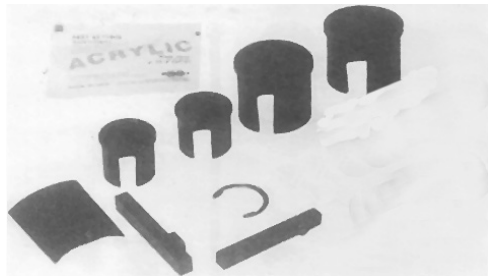


# Leadscrew Assembly

ITEM NO.	PART NO.	DESCRIPTION
1	1166	Jam Nut
2	1167	Ball Crank Handle
3	1168	Dial Lock Nut
4	1169	Dial w/200 Graduations
5	1170	Dial Holder (3 Req.)
6	1171	Socket Cap Screw (6 Req.)
7	1172	Bearing Retainer Ring
8	1173	Grease Sealed Ball Bearing (2 Req.)
9	1174	Dowel Pin
10	1175	Socket Cap Screw (4 Req.)
11	1177	Left Bearing Bracket
12	1177	Right Bearing Bracket
13	1178	Grease Seal Ball Bearing
14	1179	No. 7 Woodruff Key
15	1098	Longitudinal Feed Screw 42"
15-A	1098-A	Longitudinal w/Power Feed 42"
15-B	1098-B	Longitudinal Feed Screw 36"
15-C	1098-C	Longitudinal Feed Screw 48"
16	1150	Washer Head Screw
17	1110	Feed Nut Retaining Screw
18	1069	Longitudinal Feed Nut
19	1180	Key
20	1175	Socket Cap Screw (4 Req.)
21	1182	Feed Nut Bracket
22	1183	Key Pin
23	1070	Cross Feed Nut
24	1371	Stop Pin
25	1073	Cross Feed Screw 12" Knee
25-A	1073-A	Cross Feed Screw 9" Knee
26	1185	Cross Feed Bearing Bracket

# Repair Kit

for 1-1/2 and 2 H.P. Variable Speed  
Type Milling Machines



This kit will save you money.

Kit consists of:

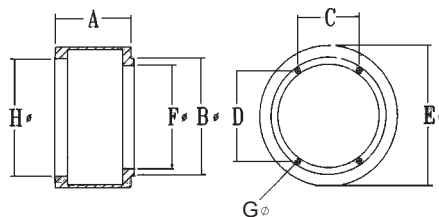
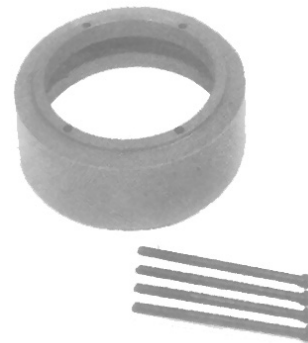
- 2 Inserts and key for motor disc
- 2 Inserts and key for spindle disc
- 2 Packs of glue
- 1 Snap ring for motor disc
- 1 Sandpaper

PART NO.	DESCRIPTION
1037-15	1 1/2 HP Repair Kit
1036-20	2 HP Repair Kit

**ALL PRICES ARE SUBJECT TO CHANGE.**

# Riser Block

Obtain additional clearance for very large workpieces.  
Bolts are additional.



MACHINE TYPE	PART NUMBER	A	B	C	D
Standard Style	1701	4"	12.492	6.670	9.630
Standard Style	1702	6"	12.492	6.670	9.630
Millport Style	037-0238	4"	12.481	6.670	9.634
Millport Style	037-0239	6"	12.481	6.670	9.634
Lagun Style	037-0375	4"	12.518	6.750	9.626
Lagun Style	037-0376	6"	12.518	6.750	9.626
Kondia Style	037-0282	6"	12.793	6.31	10.03

MACHINE TYPE	PART NUMBER	E	F	G	H
Standard Style	1701	14.950	11	.586	12.502
Standard Style	1702	14.950	11	.586	12.502
Millport Style	037-0238	14.950	11	.586	12.496
Millport Style	037-0239	14.950	11	.586	12.496
Lagun Style	037-0375	14.950	11	.586	12.521
Lagun Style	037-0376	14.950	11	.586	12.521
Kondia Style	037-0282	14.950	11	.586	12.810

Made in the U.S.A.



# Spider Handle

For Bridgeport Heads

### FEATURES:

- Converts Bridgeports to drilling operations instantly.
- Reduces operator fatigue.
- Replaces Conventional Bridgeport handle in seconds.
- Particularly suitable for drilling.

Part No. 98-215-7

# Way Wiper Kit

For Good Maintenance,  
change these once a year!



Keeping new felt wipers on your machine will keep your **Ways** like new for years.

Kit consists of:

- 4 Saddle wipers
- 2 Knee wipers

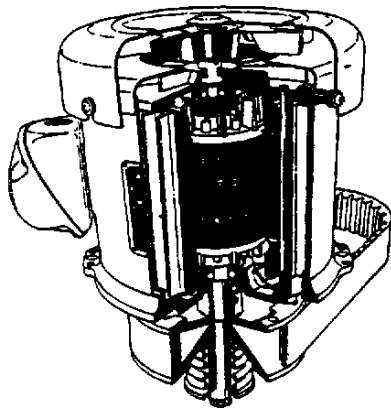
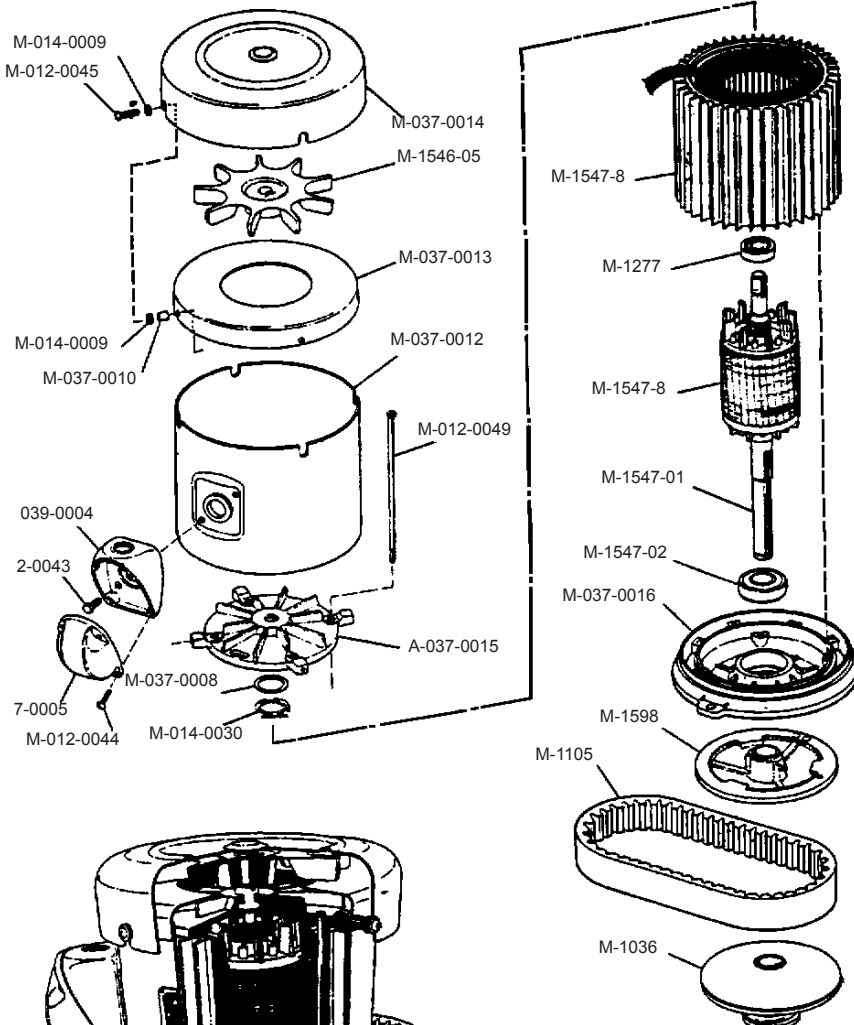
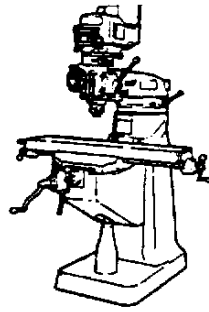
Part No. 1601

Made in the U.S.A.

**ALL PRICES ARE SUBJECT TO CHANGE.**

# Bridgeport Headmotor Parts

State Horsepower  
1 1/2 or 2

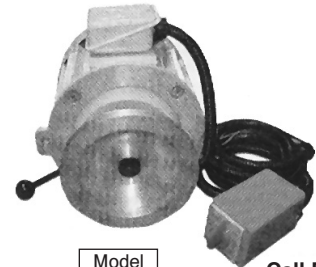


Typical illustration of a Bridgeport Series 1, 1-1/2 and 2 horsepower headmotor. Frame 145TY-4, type TVY.

Bridgeport is a registered trademark of Bridgeport Machines, Inc.

## Available Also Import 3HP Motor & Pulley Repair Kit

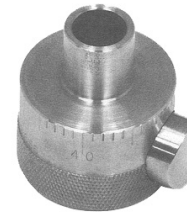
For Variable-Speed Mill Head or  
16 speeds step pulley.



Model  
VSM-3

Call For  
Pricing.

## Educated Nut



Adjust your quill depth in seconds with our depth stop nut.

- The push button releases the nut for repositioning .001" micrometer adjustments by rotating the nut.
- A proven time-saver - 8 hours or more per month
- Easy installation - fits domestic or imported mills with 1/2" - 20 threaded stop rod
- Patented

Part No. 1053

## Auto Lubricator

- Adjustable discharge volume 0-5cc
- Motor-driven piston pump. Rugged construction provides extended trouble-free operation
- Reservoir capacity 1.8L (usable)
- Oil viscosity range 150-8000 ssu at operating temp.
- Discharge pressure: 60 psi max.
- Single phase synchronous induction timing motor 50/60 Hz
- Dual voltage connect either 110v or 220v AC



Model TDM	Lubricator Cycle Time in minute		Model: TMD
	50Hz	60Hz	
18101-21	6.4	5.3	
18101-22	10.7	8.9	
18101-23	16.0	13.3	
18101-24	33.2	27.7	
18101-25	64.0	53.3	
18101-26	128.0	106.7	

## Hand Pressing Lubricator

- Specifications:**
- Discharge Capacity 8CC
  - Discharge Pressure 70 psi
  - Tank Capacity 1 liter
  - Discharge bore 4 or 6



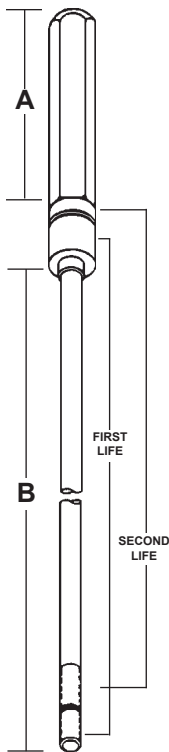
Model CKE-8

Suitable for  
Bridgeport Mill

# Two-Life Drawbar™



- Two drawbars in one
- Back-up advantage
- Prevents excessive downtime
- Longer hex head
- Extended thread length
- Black oxide coated
- To obtain "second life" after the end wears out, cut off at "V" notch, and remove large spacer



PART NO.	DIMENSION "A"		DIMENSION "B"		*TYPE OF MILL	SINGLE LIFE ONLY
	DRAWBAR HEAD	DRAWBAR LENGTH	THREAD SIZE	THREAD SIZE		
1026	4-1/4"	18-1/4"	R/8	7/16-20	Variable Speed Type Milling Machine	
1027	7-1/4"	18-1/4"	R/8	7/16-20	Right Angle Attachment	
1028	1-1/2"	18-1/4"	R/8	7/16-20	Step Pulley Type Milling Machine	
1029	3-1/2"	19-1/4"	R/8	7/16-20	Ex-Cell-O Mill	
1066-A	1-1/2"	17-11/16"	3/8-16		M-Heads	✓
1067-C	1-1/2"	16-9/16"	3/8-16		M-Heads	✓
1068-D	1-1/2"	16-3/8"	7/16-20		M-Heads	✓
1803	4-1/4"	18-1/2"	R/8	7/16-20	Comet Webb Champ. Comet Mill	
1806	9"	18-1/2"	R/8	7/16-20	F-20 Romi*Mill	
1807	4-14"	18-3/4"	R/8	7/16-20	Kondia Mill	
1808	7-1/4"	18-1/4"	R/8	7/16-20	Lagun Mil	
1818	7-1/4"	18-1/4"	7/16-20		Wells Index	
1821	5-3/18"	18-1/4"	7/16-20		Comet	✓
1825	7-5/8"	19-7/8"	1/2-13		Kondia	

\*Also fits other type milling machines.  
 Above drawbars are standard sizes.  
 Other drawbars available for various machines upon request.

Made in the U.S.A.

5C

R8



Made of high-test grade steel.; Precision ground to close tolerance.

Model	Range	# Of Collet
R8-1	1/8 - 3/4" By 8THS	7
R8-2	1/8 - 3/4" By 16THS	11
R8-3	1/8 - 7/8" By 32NDS	25
5C-2	1/8 - 1" By 8THS	8
5C-3	1/16 - 1 - 1/8" By 16THS	18
5C-4	1/6 - 1-1/16" By 32NDS	33

## KOOLRite™

### Metals Usability

Carbon and Cast Steel	Excellent
High Alloy & Stainless	Excellent
Tool Steel	Excellent
Aluminum	Excellent

### Application Guide

Grinding	Very Good
Milling, Drilling, Turning, Screw Machining, Cut Off Saw	Excellent
Tapping, Reaming, Broaching, Form Milling	Excellent

" **KOOLRite 2290** is absolutely the best coolant we have ever used on our equipment. Our sump life is easily five times longer than before with **No Odor** and **No Bacterial Growth**. **KOOLRite** has dramatically improved our work environment, reduced our maintenance and disposal costs, and our machining performance and tool life are excellent."

## Introducing

# KOOLRite™

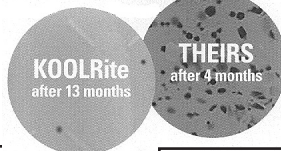
Long Life Soluble Oil Coolants with BioArmor™ Technology

KOOLRite Soluble Oil Does Not Support Bacterial Growth

Competitive Soluble Oil Teems with Bacteria



**BioArmor Technology** means built-in resistance to bacterial growth without the use of bactericides. Only KOOLRite has it!



### PRAISED IN THE SHOP

- Exceptionally long sump life - at least 2X your current oil-based coolant
- Low foam, multi-metal capability - use one coolant throughout the plant

### WELCOME AT HOME

- No stench to follow you home
- Exceptional operator appeal

### Recommended Starting Dilutions

Operations	Carbon Steel & Cast Iron	High Alloy & Stainless Steels	Tool Steels	Aluminum
Grinding	4% to 5% 1:25 to 1:20	4% to 5% 1:25 to 1:20	5% to 6% 1:20 to 1:17	5% to 7% 1:20 to 1:14
Milling, Drilling, Turning, Cut-off, Sawing, Screw Machining	5% to 7% 1:20 to 1:14	5% to 7% 1:20 to 1:14	6% to 8% 1:17 to 1:12	5% to 7% 1:20 to 1:14
Tapping, Reaming, Broaching and Form Milling	8% to 10% 1:12 to 1:10	8% to 10% 1:12 to 1:10	8% to 10% 1:12 to 1:10	8% to 10% 1:12 to 1:10

Ask us about KOOLRite 2580, a superior synthetic coolant.

ALL PRICES ARE SUBJECT TO CHANGE.



# C-Series Packages



## C80 Features

The C80 is a powerful yet affordable DRO that sets the new standard for performance, value and ease of use. Included in its productivity enhancing features are:

- Feed Rate Display<sup>1/2</sup>
- Bolt Hole Circle<sup>1</sup>
- Arc Contouring<sup>1</sup>
- Programmable Memory<sup>1/2</sup>
- Polar Coordinates<sup>1</sup>
- Line Hole Calculator<sup>1</sup>
- Tool Offsets<sup>2</sup>
- Taper Calculations<sup>2</sup>
- Axis Vectoring / Summing (3 axis)<sup>2</sup>
- Software Upgradeable (via Internet)<sup>1/2</sup>

**NOTE:** <sup>1</sup>Mill specific features. <sup>2</sup>Lathe specific features.

## C80 Milling Machine Packages

### Each package includes:

- C80 DRO Display
- Transducer Assemblies
  - Spherosyn® Scales and Reader Heads
  - Scale Support Brackets
- Mounting Bracket Kit
- C70 / C80 Display Mounting Arm

## C80 Lathe Packages

### Each package includes:

- C80 DRO Display - 2 Axis
- Transducer Assemblies
  - Microsyn® 10 on Cross Slides with 10" of travel and under
  - Spherosyn® on Cross Slides with 12" of travel and over
  - Spherosyn® on Carriage
- Lathe Bracket Kit
- Headstock Display Mount (*Carriage Mount available at no extra charge.*)

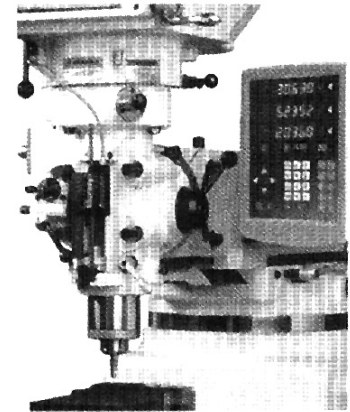
**NOTE:** Lathe Packages with scale lengths of 100" - 120" include two 11.5' extension cables. Cross Slide Transducer is available in Microsyn® 10 or Spherosyn® configuration at no extra charge.



**(TAKE 15% OFF PACKAGE PRICE)**

## C80 Milling Machine Packages 2 and 3 Axis Packages for Knee Mills

Axis Travels	Package Type	Package No.
12" x 24"	2 Axis	C802000/1
12" x 24" x 6"	3 Axis w/Quill	C803000/1Q06
12" x 30"	2 Axis	C802000/2
12" x 30" x 6"	3 Axis w/Quill	C803000/2Q06
12" x 36"	2 Axis	C1802000/3
12" x 36" x 6"	3 Axis w/Quill	C803000/3Q06
16" x 30"	2 Axis	C802000/4
16" x 30" x 6"	3 Axis w/Quill	C803000/4Q06
16" x 36"	2 Axis	C802000/5
16" x 36" x 6"	3 Axis w/Quill	C803000/5Q06
16" x 40"	2 Axis	C802000/6
16" x 40" x 6"	3 Axis w/Quill	C803000/6Q06



**NOTE:** C80 3 axis Milling Packages with Quill transducers are provided with a 2" travel Microsyn® 10 transducer. Once mounted, the transducer will provide 6" of travel.

## C80 Lathe Packages

Axis Travels	Package No.	Package Price
6" x 40"	C8006M10040SH11	
7" x 40"	C8008M10040SH11	
10" x 40"	C8010M10040SH11	
6" x 50"	C8006M10050SH11	C A L L
8" x 50"	C8008M10050SH11	
10" x 50"	C8010M10050SH11	
6" x 60"	C8006M10060SH11	F O R
8" x 60"	C8008M10060SH11	
10" x 60"	C8010M10060SH11	
8" x 72"	C8008M10072SH11	P R I C E
10" x 72"	C8010M10072SH11	
12" x 72"	C8012S00072SH11	
8" x 80"	C8008M10080SH11	
10" x 80"	C18010M10080SH11	
12" x 80"	C8012S10080SH11	
10" x 100"	C8010M10100SH11	
12" x 100"	C8012S00100SH11	
14" x 100"	C8014S00100SH11	
12" x 120"	C8012S00120SH11	
14" x 120"	C8014S00120SH11	
16" x 120"	C8016S00120SH11	
20" x 120"	C8020S00120SH11	

## FIVE YEAR WARRANTY

Newall warrants its new DRO products to be free from defects in materials and workmanship for a period of five years from the date of purchase.

## THREE-YEAR NO-FAULT WARRANTY

During the first three years of ownership, Newall's No-Fault Warranty covers system failures caused by accidental damage, customer abuse and even improper installation.

**ALL PRICES ARE SUBJECT TO CHANGE.**

# CEDARBERG

## PHASE CONVERTER SELECTION GUIDE

Model Ranges	Series I, Solid State & Kits	Series III Converters	Standard Duty Rotary Converters	Heavy Duty Rotary Converters
Model Selection	Your selection must be based on the horsepower of the largest motor to be started. Once running, smaller motors can be started one at a time.	Your selection must be based on the horsepower of the largest motor to be operated. Smaller motors may be started while the motor within the converter's range remains running.	Your selection must be based on the largest horsepower motor to be operated. These converters are designed to operate total horsepower loads up to 2 times the nameplate rating. For light starting and running loads (such as drill presses, mills, grinders, etc.), where generated 3 phase power is preferred.	*Manufacturer states: The largest horsepower motor you intend to start should not exceed our converter's nameplate rating. Our converters are designed to run horsepower loads up to 3 times the nameplate rating. Designed for medium to heavy starting & running loads (flywheel, hydraulic, CNC applications, etc).
Motor Efficiency	Up to 70%	Up to 85%	Up to 100 %	Up to 100 %
Conversion Type	3 o starting current	3 o starting & running current	3 o starting & running current	Maximum balanced 3 o starting & running current
Multiple Speed Motors	All HP ranges must be within range of the converter used.	All HP ranges must be within range of the converter used.	Motors may be operated from 0 HP to nameplate HP of the converter used	Produces maximum efficiency of multi-speed motors

Features Common to all Models: • Easy Installation • Instant Reversing • Operates on 50/60 Hz • Run More than one Machine

### 3 Phase Power Is Only A Converter Away

#### SERIES I PHASE CONVERTER

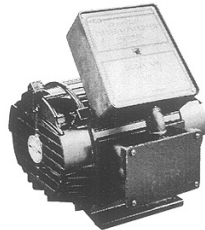
Permits Operation of 220 Volt 3 Phase Motors  
On 220 Volt Single Phase Current



MFR. NO.	MODEL NO.	HP RANGE
8000-100	Model 1100B	1/4 - 1/2 HP
8000-101	Model 1200B	1/2 - 1 HP
8000-102	Model 1300B	1 - 3 HP
8000-103	Model 1400B	3 - 5 HP
8000-104	Model 1500B	5 - 7-1/2 HP
8000-105	Model 1600B	7-1/2 - 10 HP

#### STANDARD DUTY ROTARY PHASE CONVERTER

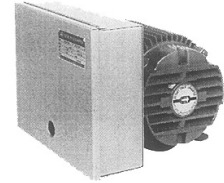
Rotary Phase Converter at an Economical Price  
Produces Continuous 3 Phase Power to 220 Volt  
3 Phase Motors from 220 Volt Single Phase Current



MFR. NO.	MODEL NO.	MFR'S RATING
8100-051	Model 10A	1 HP
8100-052	Model 30A	3 HP
8100-053	Model 50A	5 HP
8100-054	Model 75A	7-1/2 HP
8100-055	Model 100A	10 HP

#### HEAVY DUTY ROTARY PHASE CONVERTER

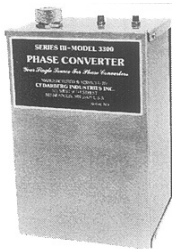
Produces Balanced 3 Phase Power for Maximum  
Motor Efficiency From Single Phase Current



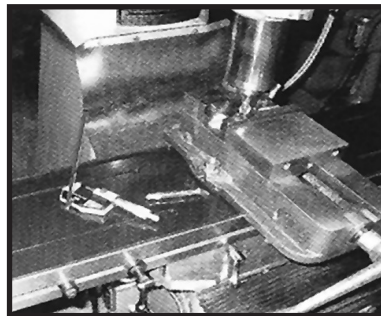
MFR. NO.	MODEL NO.	MFR'S RATING	UL LISTED AMP OUTPUT MFG. LEG
8100-001	Model 10	1 HP	1.44
8100-002	Model 30	3 HP	3.80
8100-003	Model 50	5 HP	6.00
8100-004	Model 75	7-1/2 HP	8.80
8100-005	Model 100	10 HP	11.20
8100-006	Model 150	15 HP	16.80
8100-007	Model 200	20 HP	21.60
8100-008	Model 250	25 HP	27.20

#### SERIES III PHASE CONVERTER

Provides Continuous 3 Phase Power to 220 Volt  
3 Phase Motors From 220 Volt Single Phase Current



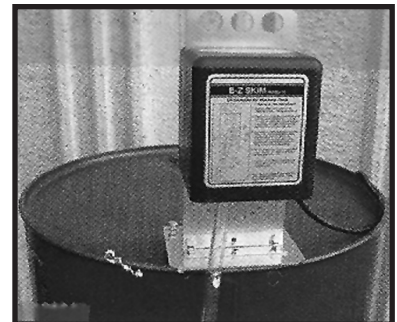
MFR. NO.	MODEL NO.	HP RANGE
8000-012	Model 3100	1/4 - 1/2 HP
8000-013	Model 3200	3/4 - 1-1/2 HP
8000-014	Model 3300	2 - 3 HP
8000-015	Model 3400	4 - 6 HP
8000-016	Model 3500	7-1/2 - 10 HP



#### Table Guard & Tote

Keep your tools in easy reach. Stops chips from falling into "T" slots. Easy way to carry your tools. Specially grooved to fit right into table's "T" slots. Heavy duty plastic-won't dent, chip, or peel. Fits easily around vises and swivel bases. Outside rib is molded to fit vise contour.

# 8706-001



#### E-Z Skim

Oil Skimmer effectively removes unwanted oil from coolant tanks. Belt arm pivots in 15 degree increments for use in deep or shallow tanks. 1" wide Polyurethane belt extends vertically 16" into tank. Removes up to 1 gal. of oil or more per hour depending on type of oil. Two models available.

Model 10 EZ SKIM

**Mataco** 2861 East Royalton Road • Broadview Heights, OH 44147 • Phone 440-546-8355 • Toll Free 1-888-785-7810

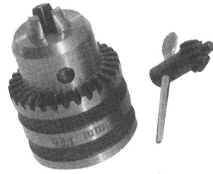
Fax 440-546-8311

ALL PRICES ARE SUBJECT TO CHANGE.

# DRILLING CHUCKS

## FEATURES:

- Finest Industrial Quality
- High Degree of Accuracy
- All Working Parts Hardened
- Key Supplied With Each Chuck



Order No.	CAPACITY	TAPER
202-5001	0 - 1/4"	1 JT
202-5002	0 - 3/8"	2 JT
202-5003	0 - 1/2"	33 JT
202-5004	0 - 1/2"	6 JT
202-5005	1/8 - 5/8"	3 JT
202-5006	3/16 - 3/4"	3 JT

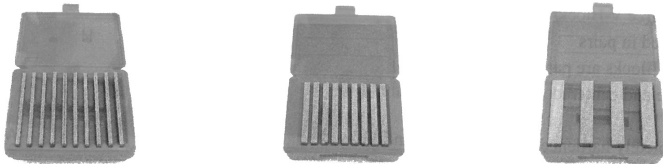
## HIGH PRECISION KEYLESS DRILLING CHUCKS

- Self - tightening
- Easy to operate
- Surfaces on all major components are precisely ground and lapped
- .004' Runout Guaranteed
- All parts except jaw guides and collar are hardened



Order No.	RANGE	TAPER
202-5010	0 - 1/4"	J 1
202-5011	0 - 3/8"	J 2
202-5012	0 - 3/8"	J 33
202-5013	1/32 - 1/2"	J 33
202-5014	1/32 - 1/2"	J 2
202-5015	1/32 - 1/2"	J 6
202-5016	1/8 - 5/8"	J 6

## Precision Steel Parallels



Hardened and ground in fitted case

### 1/2 4 MATCHED PAIRS Accuracy ORDER NO. 303-7203

- 1 Pair 1/2" x 1" x 6"
- 1 Pair 1/2" x 1-1/2" x 6"
- 1 Pair 1/2" x 1-1/4" x 6"
- 1 Pair 1/2" x 1-3/4" x 6"

Accuracy 0.0003" parallelism in height

### 1/4 9 MATCHED PAIRS ORDER NO. 303-7205

- 1 Pair 1/4" x 3/4" x 6"
- 1 Pair 1/4" x 7/8" x 6"
- 1 Pair 1/4" x 1" x 6"
- 1 Pair 1/4" x 1-1/8" x 6"
- 1 Pair 1/4" x 1-1/4" x 6"
- 1 Pair 1/4" x 1-3/8" x 6"
- 1 Pair 1/4" x 1-1/2" x 6"
- 1 Pair 1/4" x 1-5/8" x 6"
- 1 Pair 1/4" x 1-3/4" x 6"

within 0.0002" in parallelism  
Paired 0.0002" in height

### 1/8 10 PAIRS 303-7201

- 1/8" x 1/2" x 6"
- 1/8" x 5/8" x 6"
- 1/8" x 3/4" x 6"
- 1/8" x 7/8" x 6"
- 1/8" x 1" x 6"
- 1/8" x 1 1/8" x 6"
- 1/8" x 1 1/4" x 6"
- 1/8" x 1 3/8" x 6"
- 1/8" x 1 1/2" x 6"
- 1/8" x 1 5/8" x 6"

Accuracy 0.0002" parallelism in height  
0.0002" to size in height.

### 1/2 8 PAIRS 303-7204

- 1/2" x 7/8" x 6"
- 1/2" x 1" x 6"
- 1/2" x 1 1/8" x 6"
- 1/2" x 1 1/4" x 6"
- 1/2" x 1 3/8" x 6"
- 1/2" x 1 1/2" x 6"
- 1/2" x 1 5/8" x 6"
- 1/2" x 1 3/4" x 6"

within 0.0002" in parallelism  
Paired 0.0002" in height.

## Heavy Duty Ball Bearing Drill Chucks

Features: Suitable for heavy duty drilling use; All parts are hardened by heat treatment and precision ground; Super clamping power

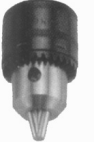
Model	Mounting Taper	Capacity	Wt. Lbs.
12001	J6	1/32" - 1/2"	2.64
12003	J3	1/32" - 5/8"	3.30
12005	J4	1/16" - 3/4"	4.73
12007	J5	3/16" - 1"	9.02



## Electric Drill Chucks



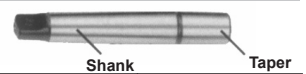
Features: For electric drill, super gripping power; Quick releasing of drill bits and not slip when drilling cement; Adopt alloy steel; durable for impact & friction; Lasted for long time.



Model	Type	Female Thread	Capacity	Wt. Lbs.
11078	Keyless	3/8"x24UNF	1/16"-3/8"	0.7
11081	type	1/2"x20UNF	1/32"-1/2"	1.54
11086		5/8"x16UNF	1/8"-5/8"	2.3
10032	Key type	3/8"x24UNF	1/32"-3/8"	0.6
10053		1/2"x20UNF	3/64"-1/2"	1.0

## Drill Chuck Shanks

### A) MT Shanks



Shank Taper	Quality Import	ALBRECHT Model
MT J0	/	AM0J0
MT J1	/	AM0J1
MT J2	/	AM1J0
MT J3	/	AM1J1
MT J4	/	AM1J2
MT J5	/	AM1J3
MT J6	/	AM1J6
MT J7	/	AM2J0
MT J8	/	AM2J1
MT J9	/	AM2J2
MT J10	/	AM2J3
MT J11	/	AM2J6
MT J12	/	AM3J1
MT J13	/	AM3J2
MT J14	/	AM3J3
MT J15	/	AM3J6
MT J16	/	AM4J2
MT J17	/	AM4J3
MT J18	/	AM4J6

### B) Straight Shanks



Shank Taper	Quality Import	ALBRECHT Model
3/8" J0	/	A38J0
3/8" J1	38001	A38J1
3/8" J2	38002	/
1/2" J0	/	A12J0
1/2" J1	12001	A12J1
1/2" J2	12002	A12J2
1/2" J33	12033	A12J33
1/2" J6	12006	A12J6
5/8" J1	/	A58J1
5/8" J2	/	A58J2
5/8" J33	/	A58J33
5/8" J6	/	A58J6
3/4" J1	/	A34J1
3/4" J2	34002	A34J2
3/4" J6	34006	A34J6
1" J2	/	A1J2
1" J33	10033	A1J33
1" J6	10006	A1J6

### C) R8 Shanks



Shank Taper	Quality Import	ALBRECHT Model
R8 J1	/	AR8J1
R8 J2	R8002	AR8J2
R8 J33	R8033	AR8J33
R8 J6	R8006	AR8J6

All Prices Are Subject To Change.



formerly  
Machine & Tool Accessories Co.



2861 East Royalton Road  
Broadview Heights, OH 44147  
Phone 440-546-8355  
Toll Free 1-888-785-7810  
Fax 440-546-8311

## EDM Wire Parts



**Connected Parts**



**Diamond Guides**

**Flushing Cup**

**Power Feed Contact**

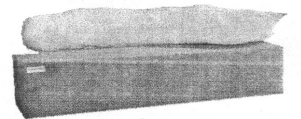
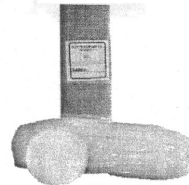
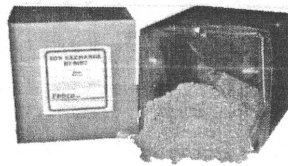
- Mataco Wire EDM spare parts are made of the highest quality materials to assure consistent and lasting wear
- Exact tolerances are reached by each dimension finish ground
- Wire surfaces are polished for smoother movements
- Click the appropriate icon for parts that are for wire EDM from:

**MITSUBISHI** brother HITACHI CHARMILLES **FANUC** **Sodick** **JAPAX**

## EDM Filters and Tubes

## EDM Resin

### EDM Filters



- Mataco EDM Filters are made of the highest quality materials to assure consistent and lasting wear

Description
1 CU. FT. BAG
1/2 CU. FT. BAG
A CU. FT. BULK
5 CU. FT. BULK

CALL FOR LATEST PRICES